

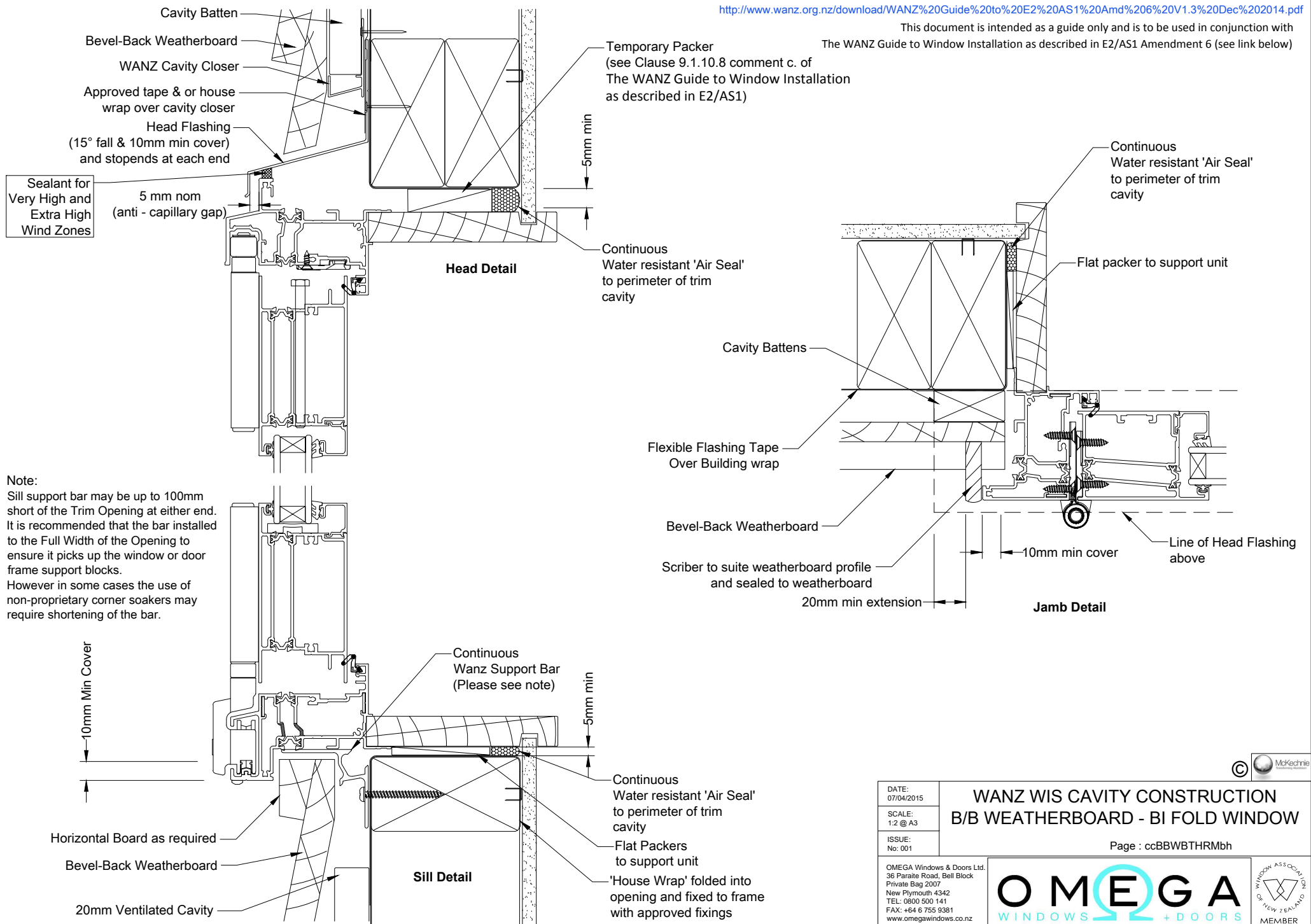


**Note:**  
 Sill support bar may be up to 100mm short of the Trim Opening at either end. It is recommended that the bar installed to the Full Width of the Opening to ensure it picks up the window or door frame support blocks. However in some cases the use of non-proprietary corner soakers may require shortening of the bar.

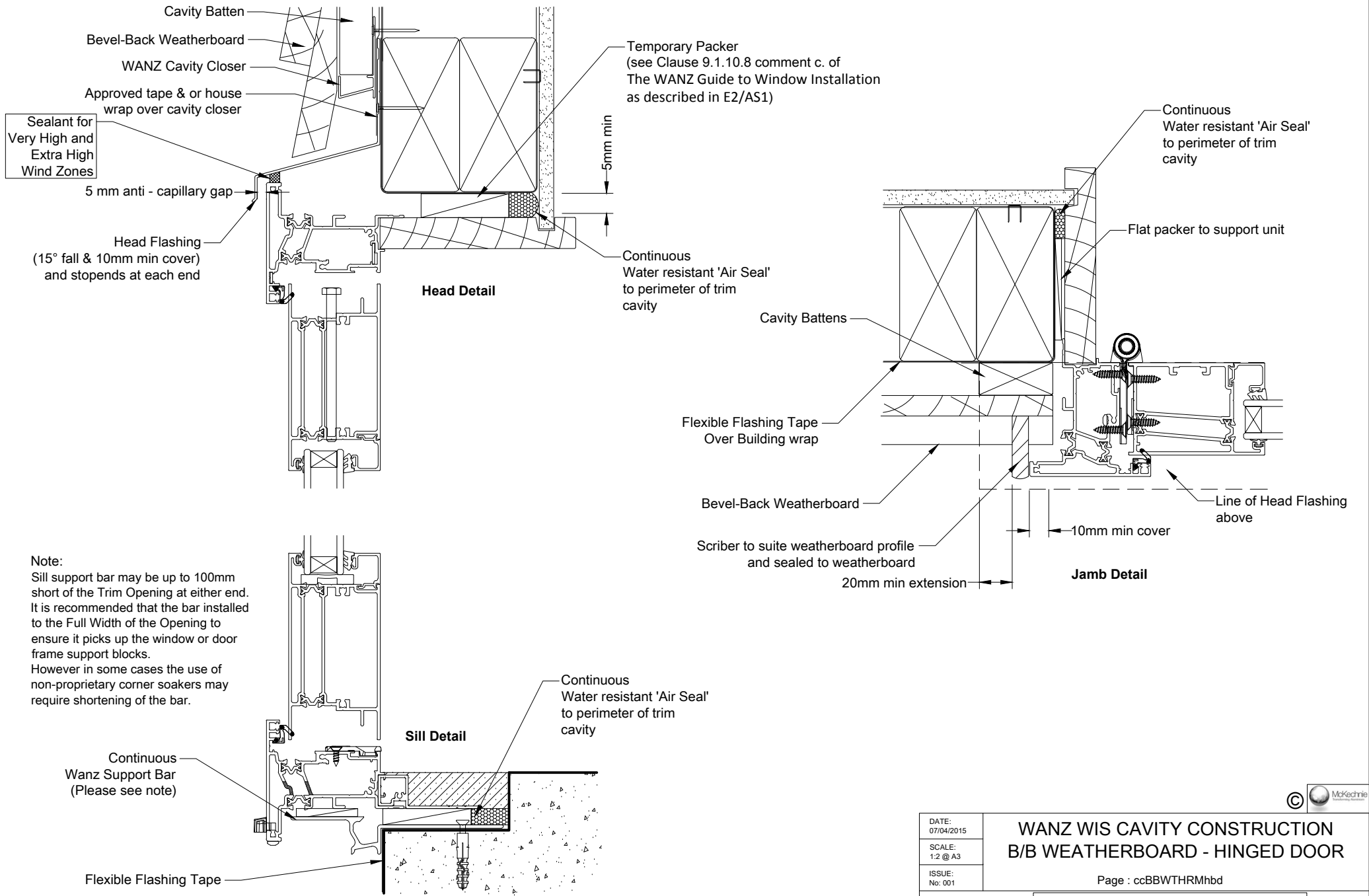
This document is intended as a guide only and is to be used in conjunction with The Wanz Guide to Window Installation as described in E2/AS1 Amendment 6 (see link below) <http://www.wanz.org.nz/download/WANZ%20Guide%20to%20E2%20AS1%20Amd%206%20V1.3%20Dec%202014.pdf>

DATE: 07/04/2015	<b>WANZ WIS CAVITY CONSTRUCTION B/B WEATHERBOARD - BI FOLD WINDOW</b>
SCALE: 1:2 @ A3	
ISSUE: No. 001	
Page : ccBBWBTHRMaw	
OMEGA WINDOWS + DOORS 36 Paratit Road, Bell Block Private Bag 2007 New Plymouth 4342 TEL: 0800 500 141 FAX: +64 6 755 9381 www.omegawindows.co.nz	
 	

This document is intended as a guide only and is to be used in conjunction with The WANZ Guide to Window Installation as described in E2/AS1 Amendment 6 (see link below)



DATE: 07/04/2015	<b>WANZ WIS CAVITY CONSTRUCTION B/B WEATHERBOARD - BI FOLD WINDOW</b>
SCALE: 1:2 @ A3	
ISSUE: No. 001	
Page : ccBBWBTHRMbh	
<p>OMEGA Windows &amp; Doors Ltd. 36 Paratū Road, Bell Block Private Bag 2007 New Plymouth 4342 TEL: 0800 500 141 FAX: +64 6 755 9381 <a href="http://www.omegawindows.co.nz">www.omegawindows.co.nz</a></p>	



This document is intended as a guide only and is to be used in conjunction with The Wanz Guide to Window Installation as described in E2/AS1 Amendment 5 (see link below) <http://www.wanz.org.nz/download/WANZ%20Guide%20to%20E2%20AS1%20Amd%206%20V1.3%20Dec%202014.pdf>

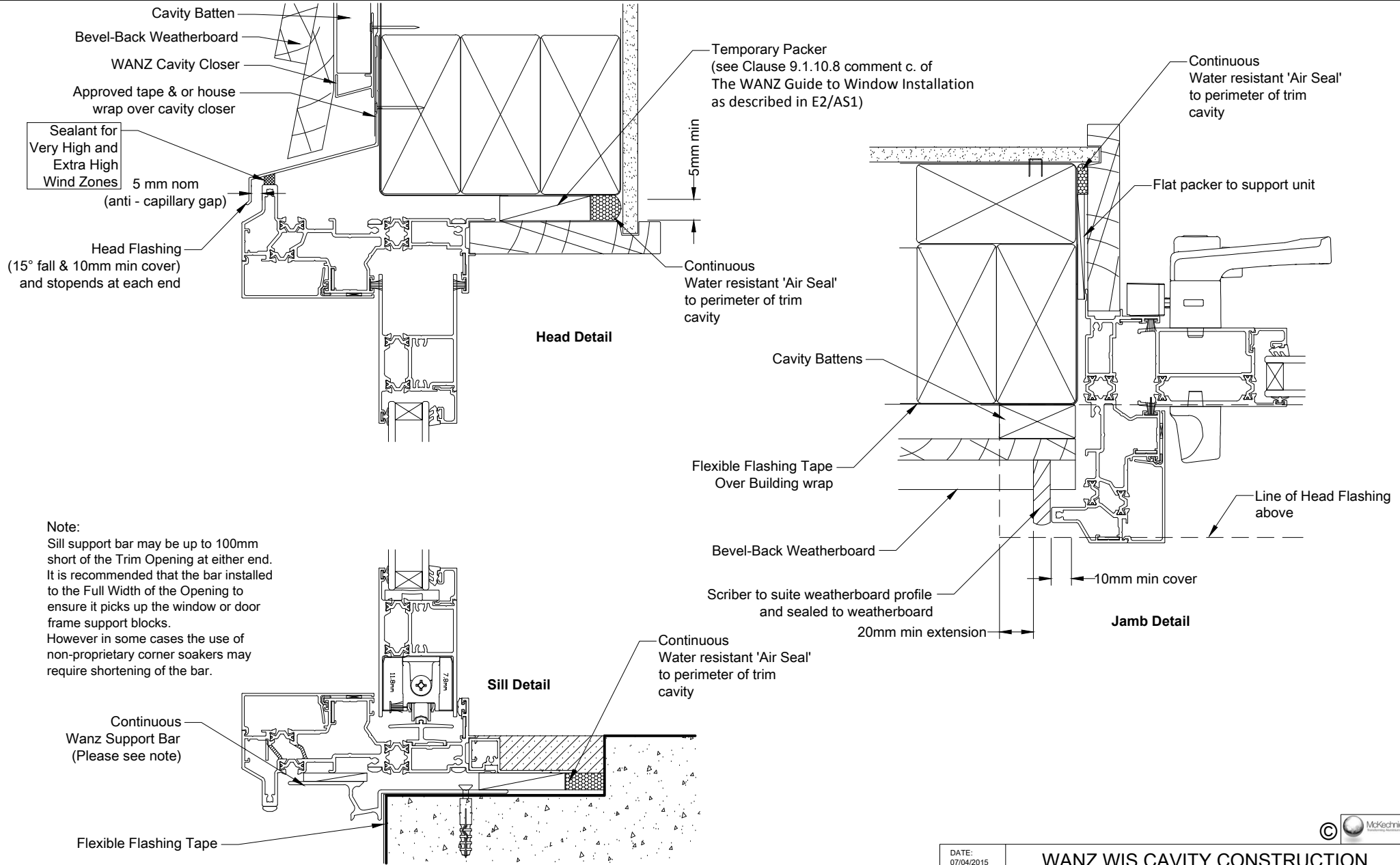
DATE:  
07/04/2015  
SCALE:  
1:2 @ A3  
ISSUE:  
No: 001

**WANZ WIS CAVITY CONSTRUCTION  
B/B WEATHERBOARD - HINGED DOOR**

Page : ccBBWTHRMhbd

OMEGA Windows & Doors Ltd.  
36 Paratit Road, Bell Block  
Private Bag 2007  
New Plymouth 4342  
TEL: 0800 500 141  
FAX: +64 6 755 9381  
www.omegawindows.co.nz

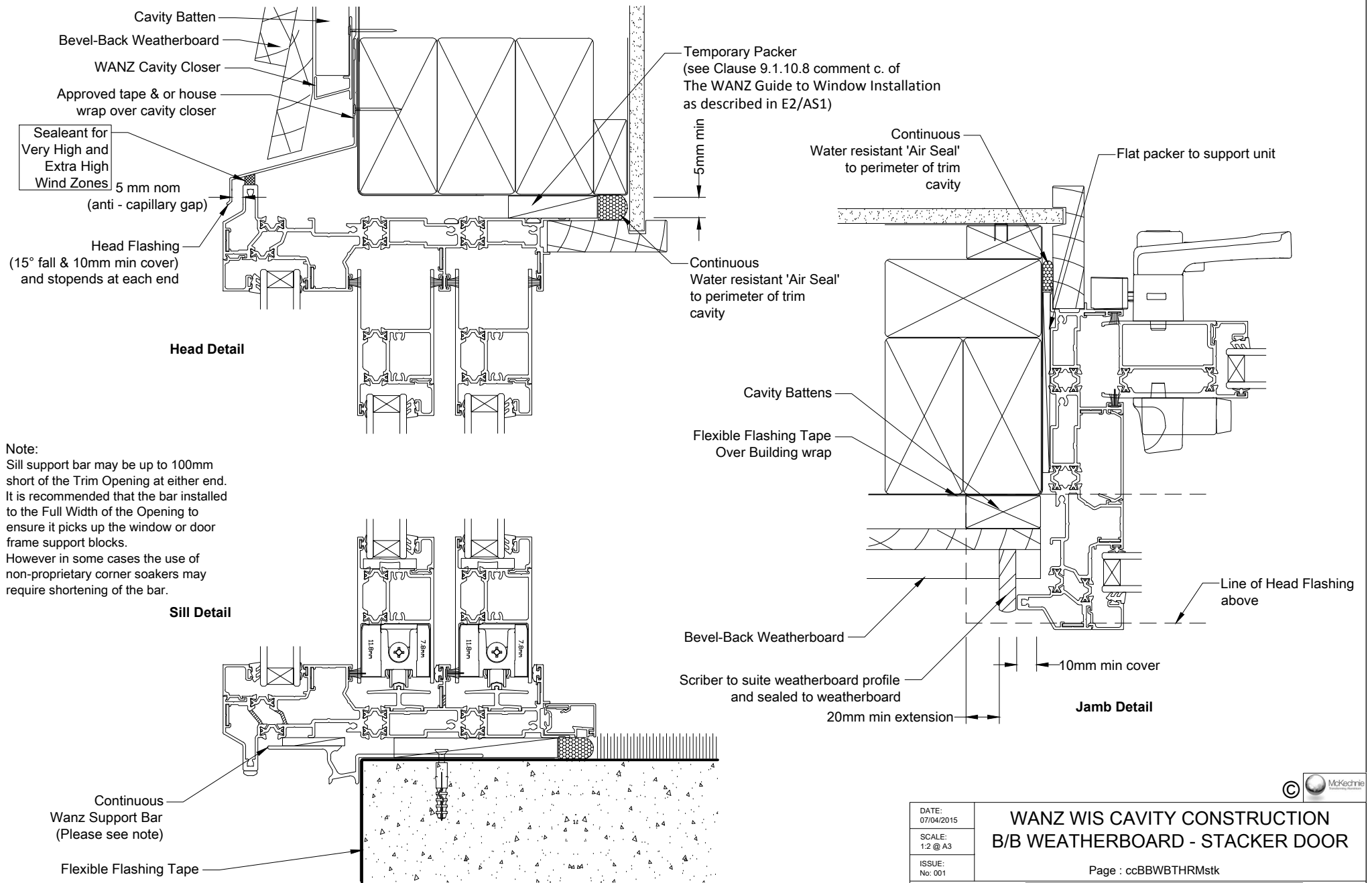




**Note:**  
 Sill support bar may be up to 100mm short of the Trim Opening at either end. It is recommended that the bar installed to the Full Width of the Opening to ensure it picks up the window or door frame support blocks. However in some cases the use of non-proprietary corner soakers may require shortening of the bar.



This document is intended as a guide only and is to be used in conjunction with The Wanz Guide to Window Installation as described in E2/AS1 Amendment 5 (see link below)  
<http://www.wanz.org.nz/download/WANZ%20Guide%20to%20E2%20AS1%20Amd%206%20V1.3%20Dec%202014.pdf>

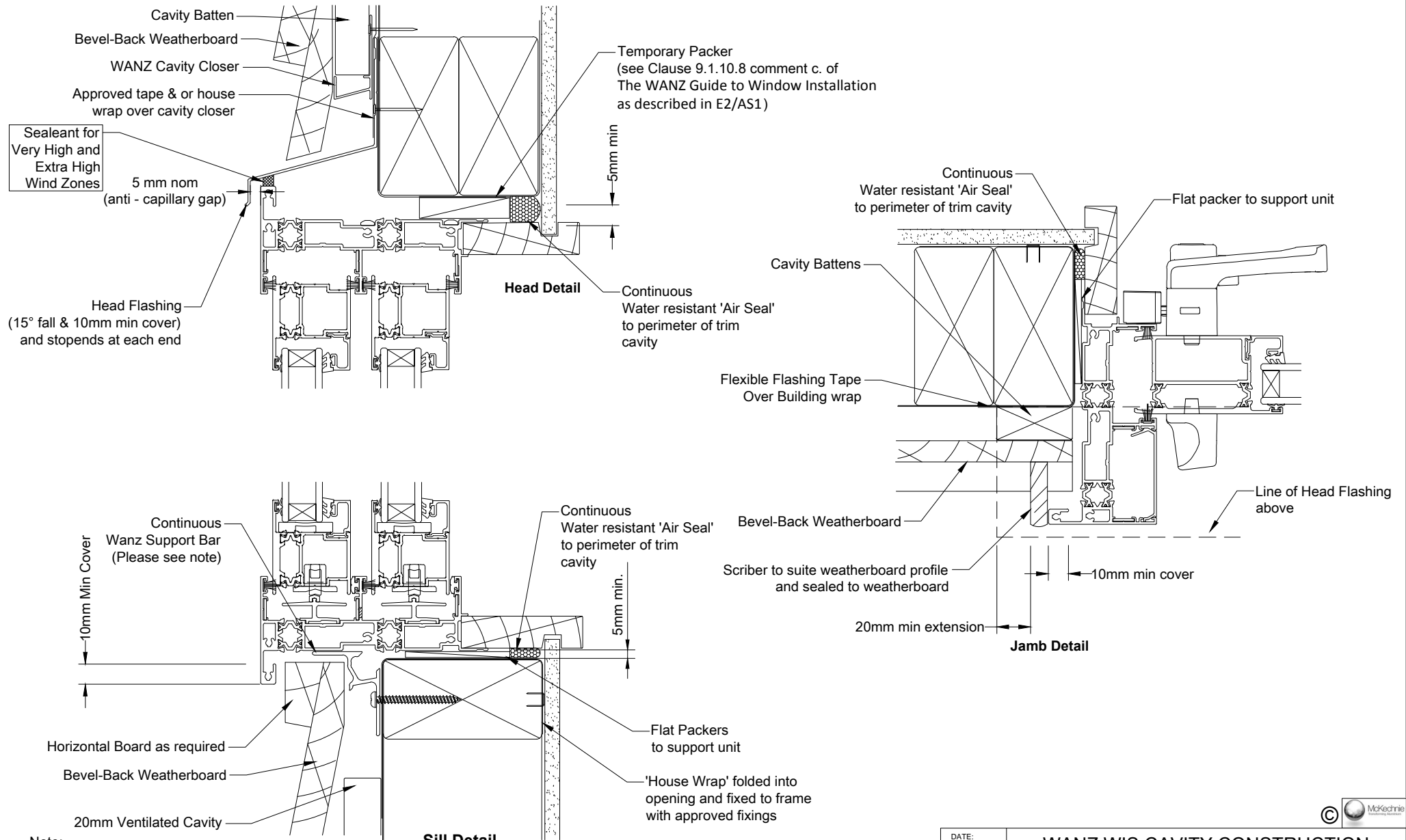
DATE: 07/04/2015	<b>WANZ WIS CAVITY CONSTRUCTION B/B WEATHERBOARD - SLIDING DOOR</b>	Page : ccBBWBTHRMslid
SCALE: 1:2 @ A3		
ISSUE: No. 001		
OMEGA WINDOWS + DOORS 36 Paratū Road, Bell Block Private Bag 2007 New Plymouth 4342 TEL: 0800 500 141 FAX: +64 6 755 9381 www.omegawindows.co.nz		  MEMBER



**Note:**  
 Sill support bar may be up to 100mm short of the Trim Opening at either end. It is recommended that the bar installed to the Full Width of the Opening to ensure it picks up the window or door frame support blocks. However in some cases the use of non-proprietary corner soakers may require shortening of the bar.

This document is intended as a guide only and is to be used in conjunction with The Wanz Guide to Window Installation as described in E2/AS1 Amendment 5 (see link below)  
<http://www.wanz.org.nz/download/WANZ%20Guide%20to%20E2%20AS1%20Amd%206%20V1.3%20Dec%202014.pdf>

DATE: 07/04/2015	<b>WANZ WIS CAVITY CONSTRUCTION B/B WEATHERBOARD - STACKER DOOR</b>
SCALE: 1:2 @ A3	
ISSUE: No: 001	
Page : ccBBWBTHRMstk	
OMEGA Windows & Doors Ltd. 36 Paratū Road, Bell Block Private Bag 2007 New Plymouth 4342 TEL: 0800 500 141 FAX: +64 6 755 9381 www.omegawindows.co.nz	<b>OMEGA</b> WINDOWS + DOORS
 	



**Note:**  
 Sill support bar may be up to 100mm short of the Trim Opening at either end.  
 It is recommended that the bar installed to the Full Width of the Opening to ensure it picks up the window or door frame support blocks.  
 However in some cases the use of non-proprietary corner soakers may require shortening of the bar.

This document is intended as a guide only and is to be used in conjunction with  
 The Wanz Guide to Window Installation as described in E2/AS1 Amendment 5 (see link below)  
<http://www.wanz.org.nz/download/WANZ%20Guide%20to%20E2%20AS1%20Amd%206%20V1.3%20Dec%202014.pdf>

DATE: 07/04/2015	<b>WANZ WIS CAVITY CONSTRUCTION B/B WEATHERBOARD - SLIDING WINDOW</b>
SCALE: 1:2 @ A3	
ISSUE: No: 001	
Page : ccBBWBTHRMsw	
OMEGA Windows & Doors Ltd. 36 Paratū Road, Bell Block Private Bag 2007 New Plymouth 4342 TEL: 0800 500 141 FAX: +64 6 755 9381 www.omegawindows.co.nz	<b>OMEGA</b> WINDOWS + DOORS
